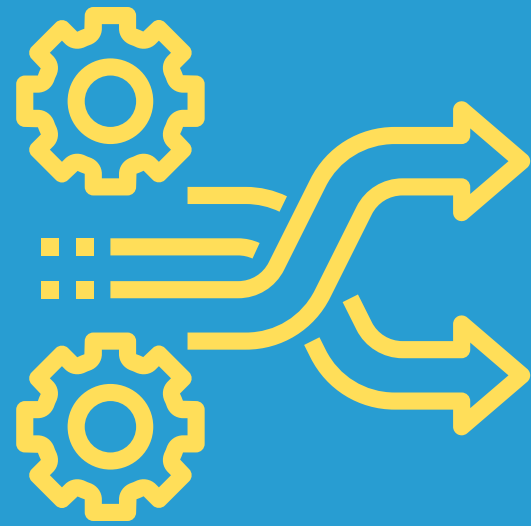


Clinical Champions as an Implementation Strategy

CHCs with **clinical champions** demonstrated statistically significant increases in guideline-concordant statin prescribing over the course of the study



Champions can also influence provider behavior and prescribing patterns

Characteristics of **clinical champions**

Capacity

Credibility



Engagement

Influence



organizational support

Each **clinical champion** followed a unique implementation path suited to the particular context



Bunce, A.E., Gruß, I., Davis, J.V. et al. Lessons learned about the effective operationalization of champions as an implementation strategy: results from a qualitative process evaluation of a pragmatic trial. *Implementation Sci* 15, 87 (2020).

<https://doi.org/10.1186/s13012-020-01048-1>